



November 24-28, 2021  
Los Angeles, CA



**Intermediate Rope Bondage  
Harnesses, TK, & More!  
by Bound To Be Knotty**

# Part 1



**CHEST HARNESS**  
*rope bondage*



# Bound To Be Knotty

Shibari Shawn

Gay Rope Bondage Guide  
Capitol Hill, Seattle  
phone: 907-435-4055  
email: jjones52246@gmail.com



Shibari Shawn



shibarishawnb2bk



ToKnotty



bound2beKN0TTY

What choices to make when tying a chest harness.



## One Band vs Two Bands... or more



photos by ropes.sweat.and.tears

## V Neck vs Perpendicular Neck



photos by thebenitoflakes

## Arms Tied vs Arms Out



photo by bound\_to\_be\_knotty



photo by ropes.sweat.and.tears

## Arms Tied vs Arms Out



photo by thebenitoflakes



photo by bondagious

# How do you tie up the arms?



photo by Shibari Study



photo by ropes.sweat.and.tears



photo by bound\_to\_be\_knotty

TK = Takate Kote 高手小手  
Gote 後手



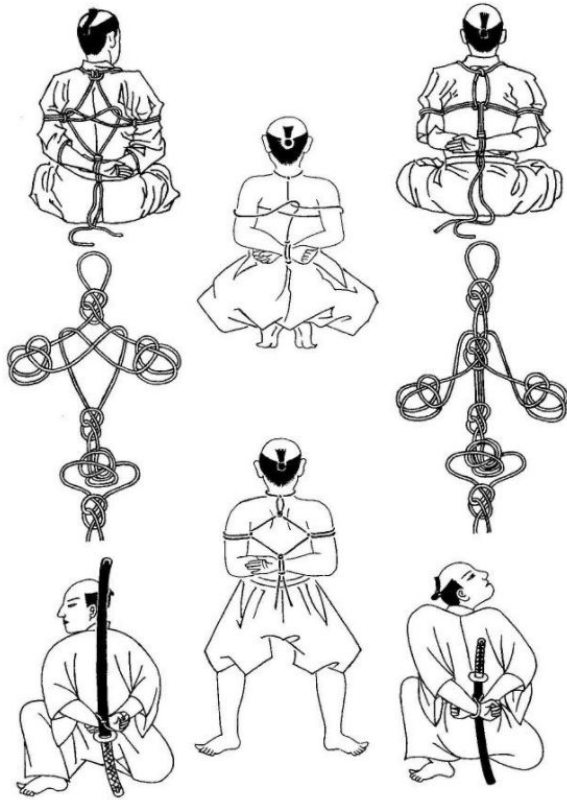
photo by bound\_to\_be\_knotty



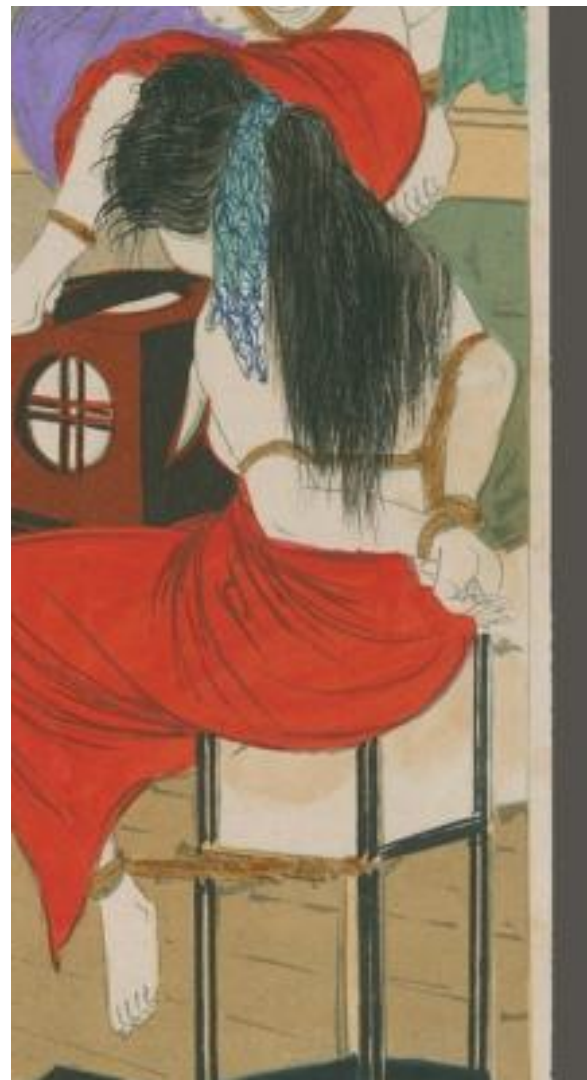
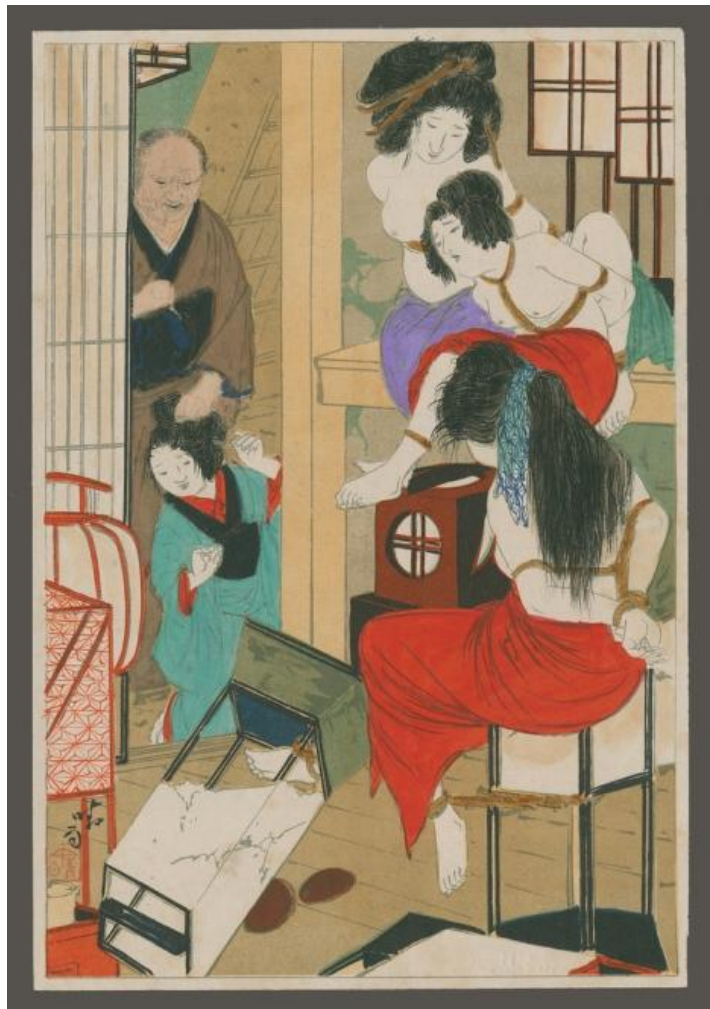
photo by Shibari Study

Christian Russo

“Hojojutsu: The warriors art of the rope”



Police in the Edo period (1603-1868)  
didn't use a chest harness



1888 (Meiji era)

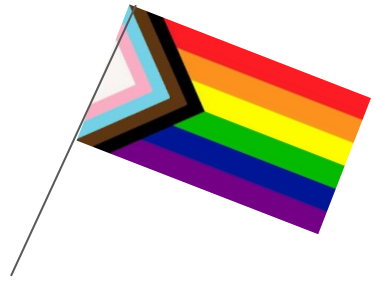
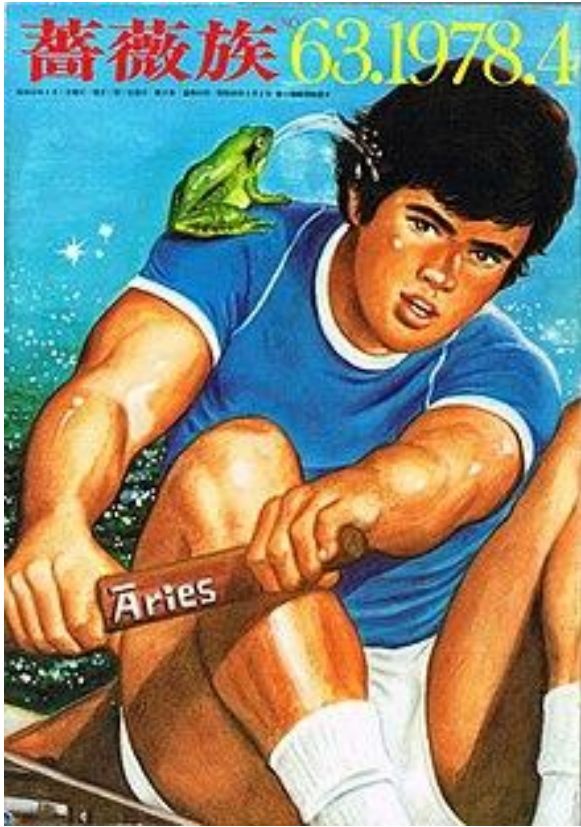


1985 Holland Festival in Amsterdam

## Kabuki Theater

### Yoshitsune and the Thousand Cherry Trees

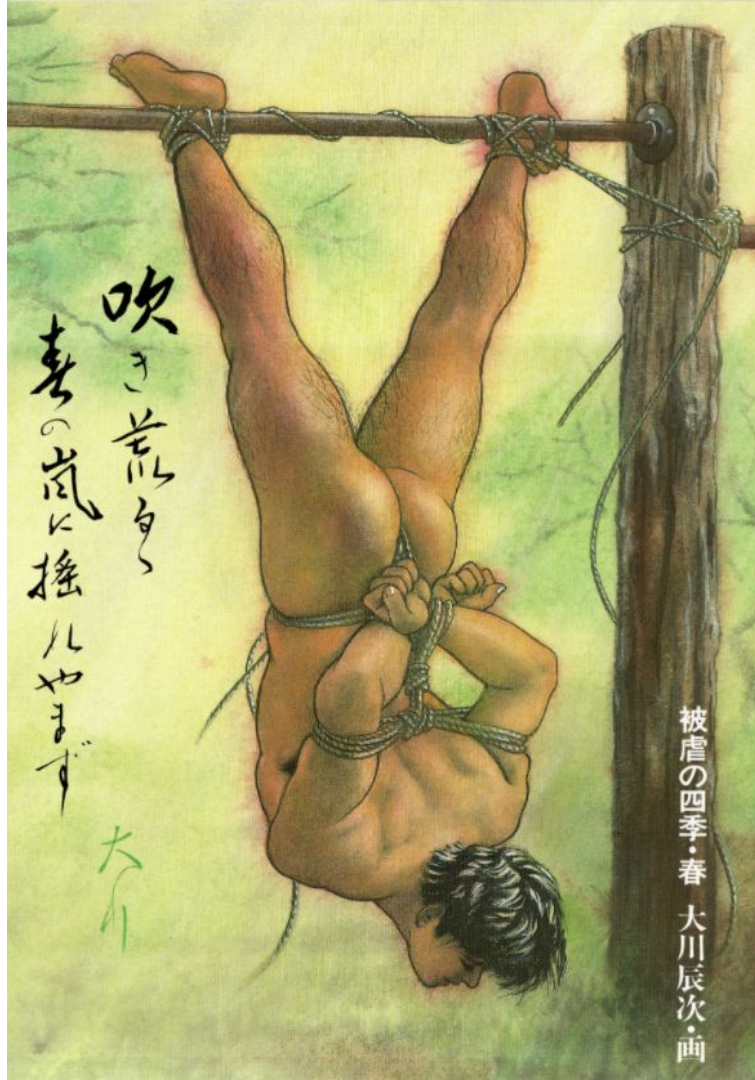
Printed 1747



Barazoku 1970  
“The Rose Tribe”  
Magazine



Published  
1982



Published  
1984

TK = Takate Kote 高手小手  
Gote 後手



Tengu = 天狗



photos by bound\_to\_be\_knotty

# Fishermans Harness



photo by ropes.sweat.and.tears



photo by bound\_to\_be\_knotty

# Rifle Harness: Teppo 鉄砲



photos by bound\_to\_be\_knotty

# How do you tie up the arms?



photo by Shibari Study



photo by ropes.sweat.and.tears



photo by bound\_to\_be\_knotty

## Decorative Fronts



photos by bound\_to\_be\_knotty

Diamond Pattern (hishi 菱)  
Turtle Shell Pattern (kikkou 亀甲)



photo by ITSAKABEN



photo by ropes.sweat.and.tears

## Double Coin Knots



photo by bondagious



photo by tygeryoshi

# Parts of a Chest Harness



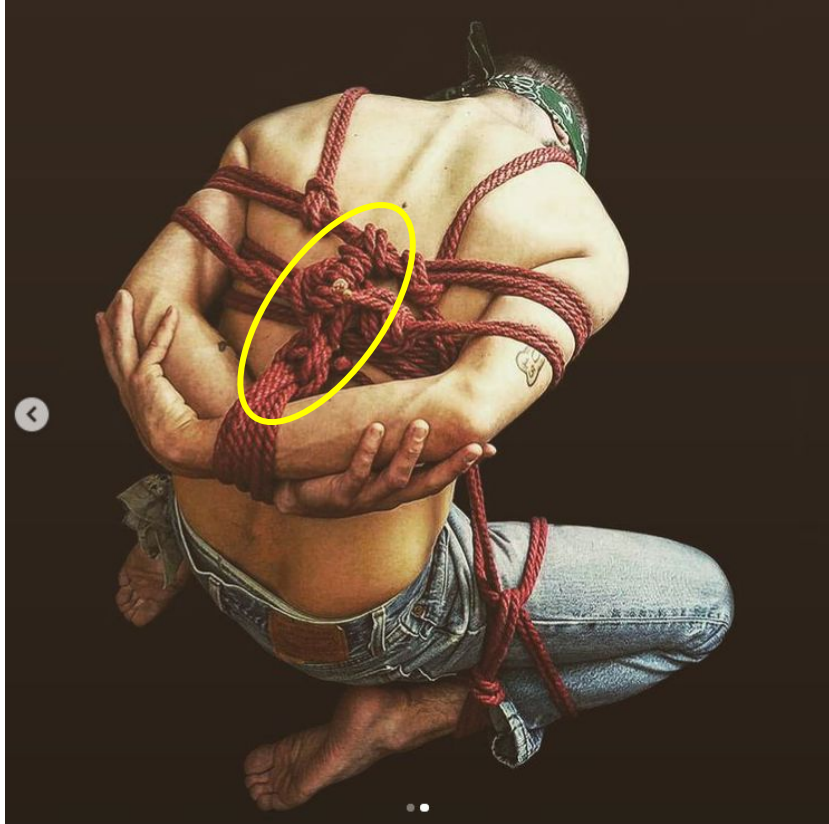
photos by bondageotter

# Parts of a Chest Harness



Bands

# Parts of a Chest Harness



Stem

# Parts of a Chest Harness



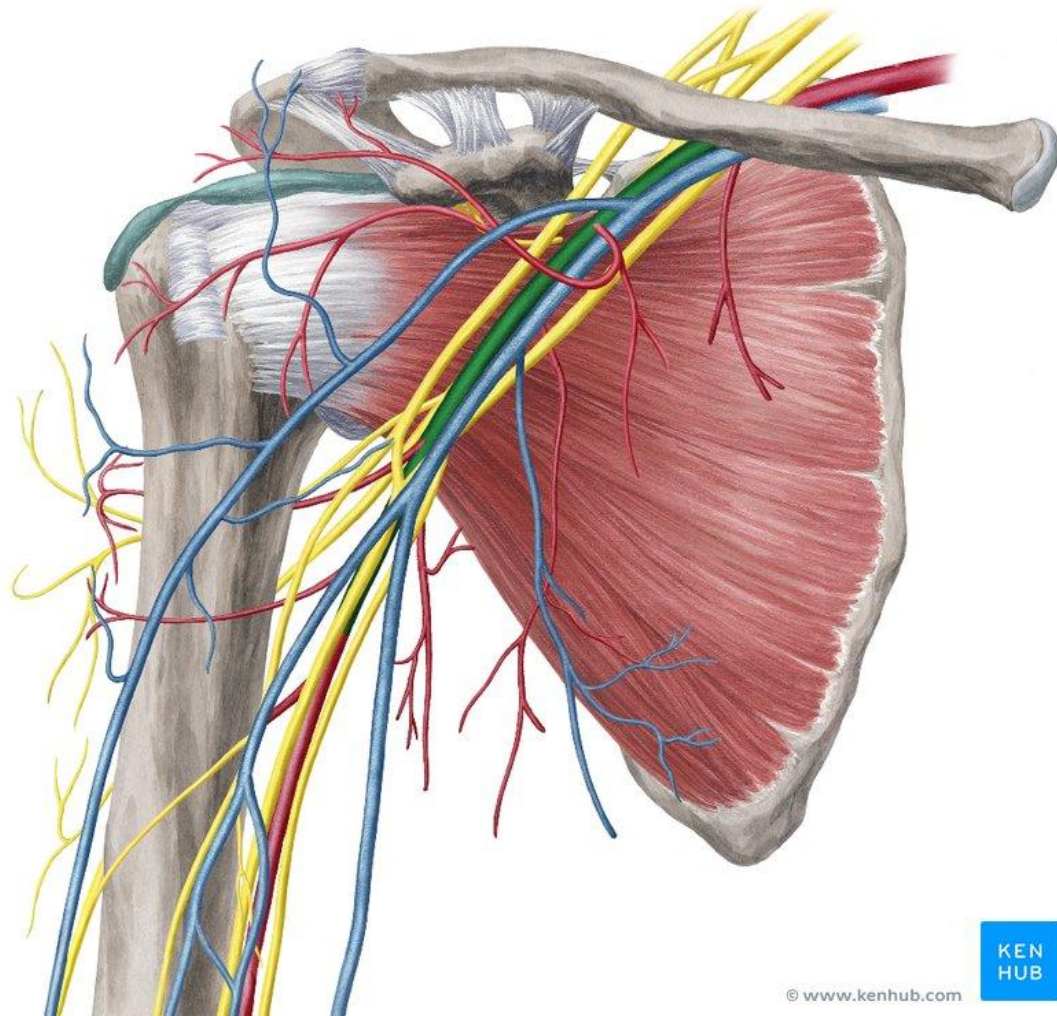
Cinch  
kannuki 罫

# Parts of a Chest Harness



Cinch  
kannuki 罫

# Safety Tips



# Safety tips:

- 1) Avoid the arm line
- 2) Top band tighter than the lower band
- 3) Single column on the wrist

# Round 1



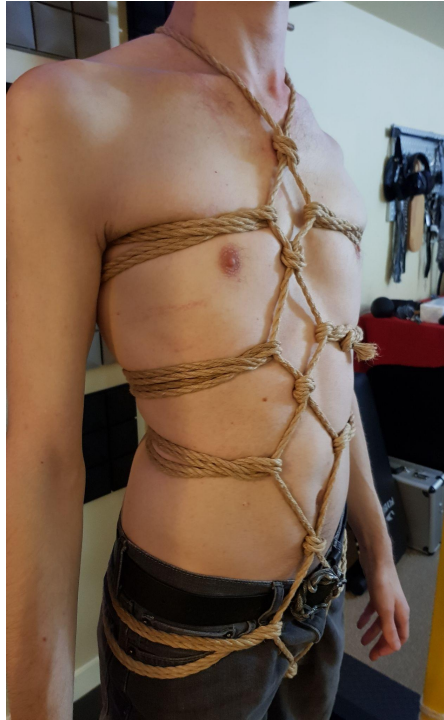
Shinju Harness

# Round 2



Bulldog Harness

# Round 3



Hishi Tie

# Thank you!

## DONATIONS:



**venmo**



## Bound To Be Knotty

Shibari Shawn

Gay Rope Bondage Guide  
Capitol Hill, Seattle  
phone: 907-435-4055  
email: jjones52246@gmail.com



Shibari Shawn



shibarishawnb2bk

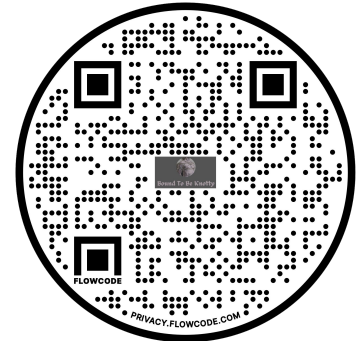


ToKnotty



bound2beKNOTTY

*CLAW21 Rope Session  
Wait List Sign Up:*



# Part 2



Mt. Fuji TK



X friction

1/2 moon friction

L friction

# Thank you!

## DONATIONS:



**venmo**



## Bound To Be Knotty

Shibari Shawn

Gay Rope Bondage Guide  
Capitol Hill, Seattle  
phone: 907-435-4055  
email: jjones52246@gmail.com



Shibari Shawn



shibarishawnb2bk

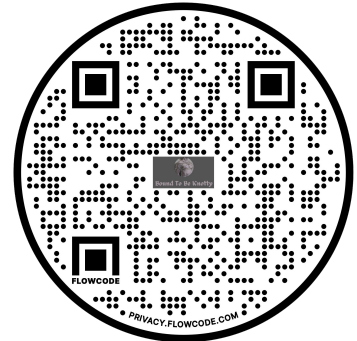


ToKnotty



bound2beKNOTTY

*CLAW21 Rope Session  
Wait List Sign Up:*



# Video Links:

Shinju Harness:

<https://www.youtube.com/watch?v=NYVFDeldwt4>

Bulldog Harness:

[https://www.youtube.com/watch?v=\\_oZ8U8FpGAA](https://www.youtube.com/watch?v=_oZ8U8FpGAA)

Hishi Tie:

<https://www.youtube.com/watch?v=Ku1SIb7CX74>

Mt. Fuji Harness:

<https://www.youtube.com/watch?v=htD7X97lcoo>